

Data -> C:\USERS\PUBLIC\DOCUMENTS\CHEMSTATION\1\DATA\SE07NOV 2023-11-07 08-21-00\  
Sample-> CPT22010446-13-D2-80deg-1h

Injection Date : Tue, 7. Nov. 2023

Seq Line : 11

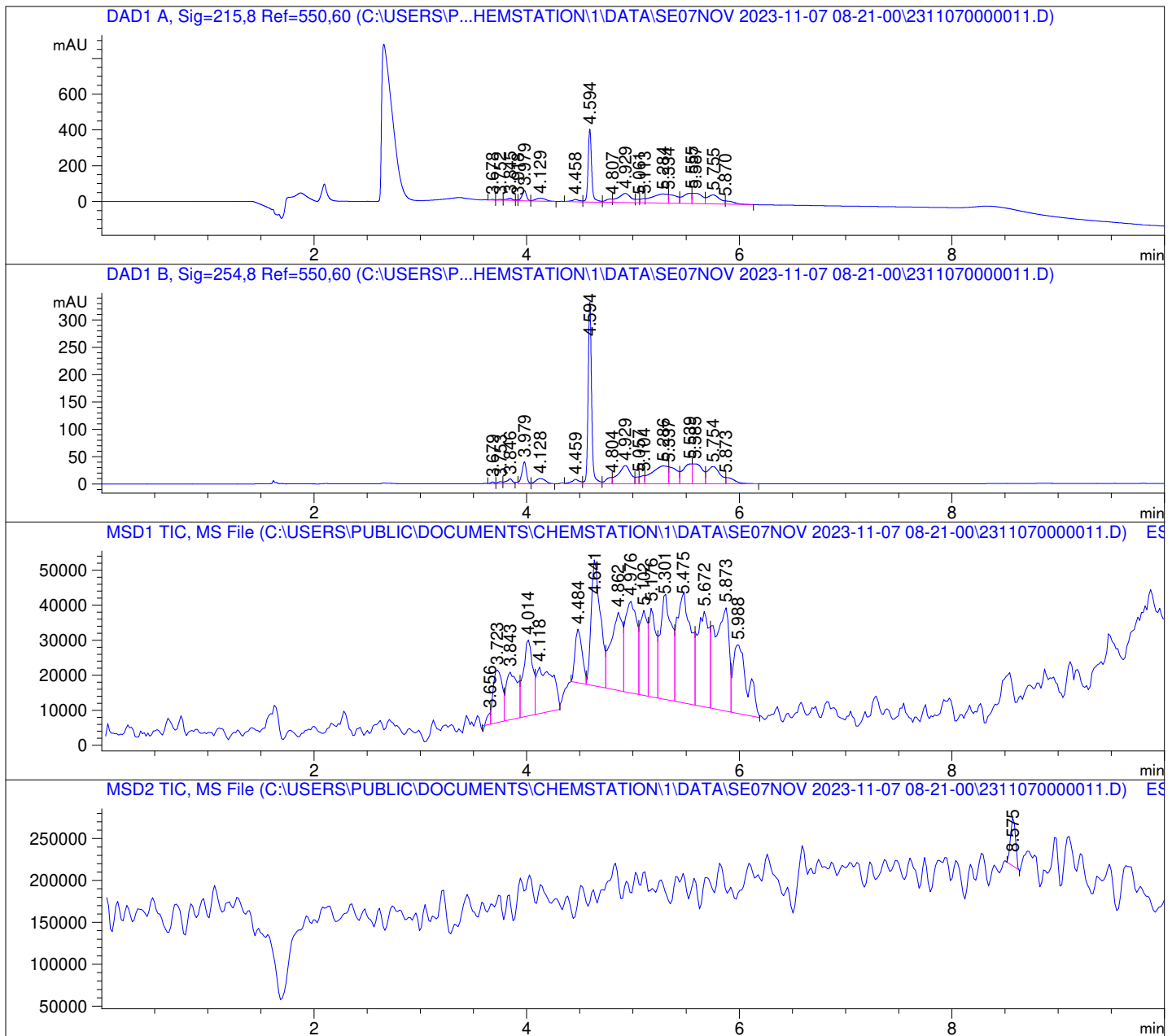
Location : 51

Inj. Vol. : 2 µl

Acq. Method : C:\Users\Public\Documents\ChemStation\1\Data\SE07NOV 2023-11-07  
08-21-00\22010446 LCMS-6.M

Analysis Method : C:\Users\Public\Documents\ChemStation\1\Data\SE07NOV 2023-11-07  
08-21-00\22010446 LCMS-6.M (Sequence Method)

Waters XBridge Phenyl (4.6 \* 150 mm; 3.5 µm); 0.05% TFA (aq) / AcN: 100/0 (0.0 min) -  
-> (6.0 min) --> 70/30 (0.0 min) --> (2.0 min) --> 10/90 (2.0 min); Flow: 1.0 ml/min;  
MSD1 = positive; MSD2 = negative

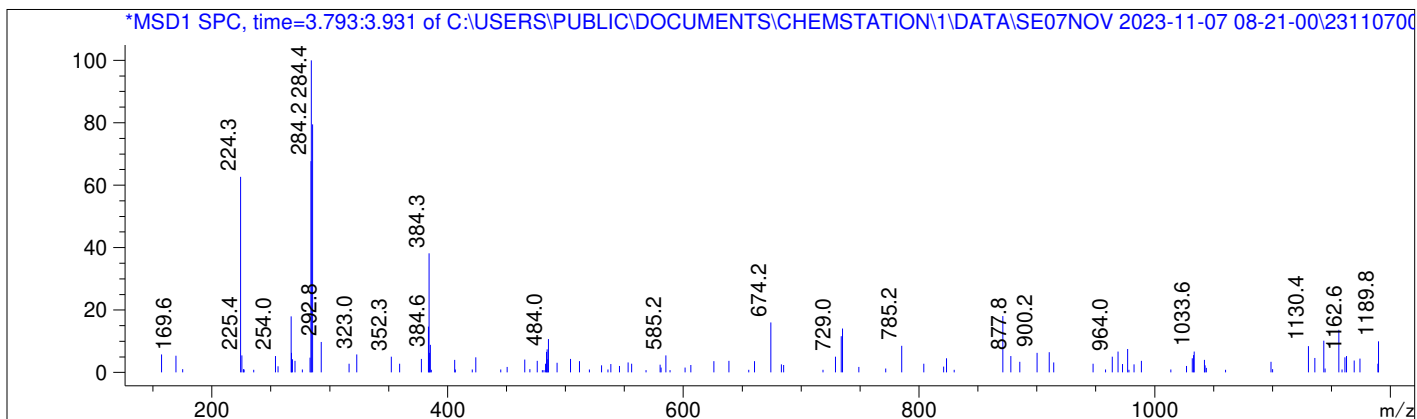
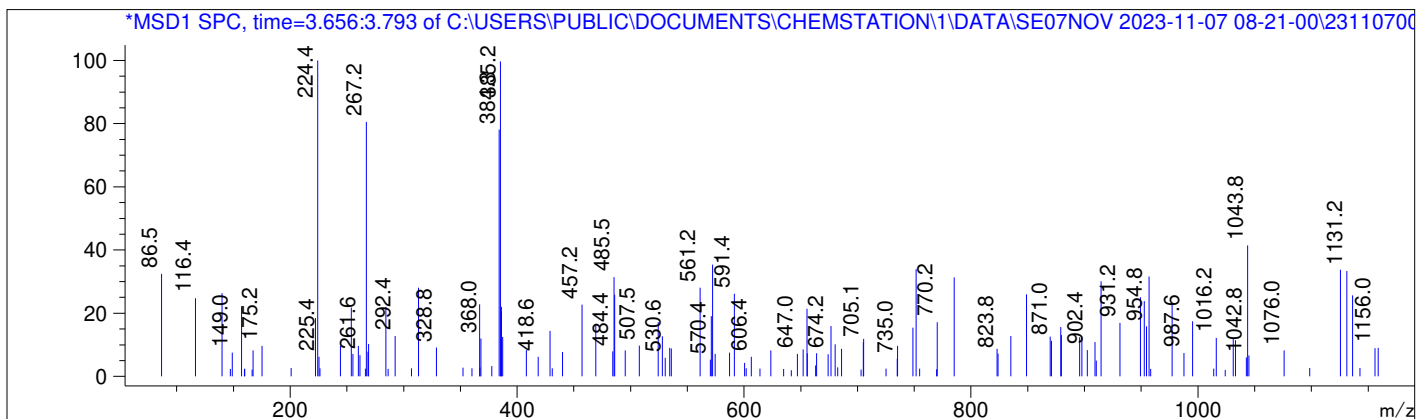
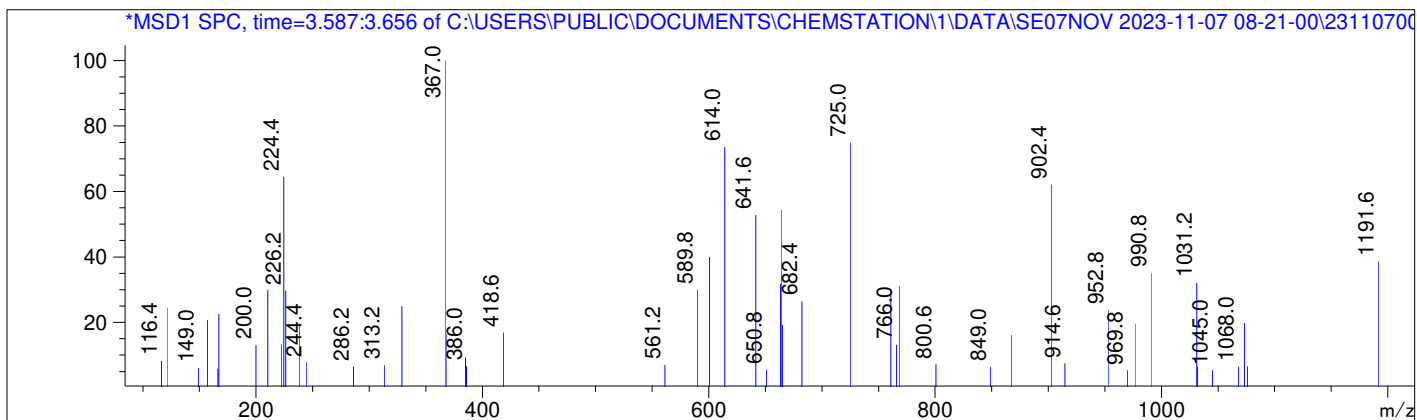


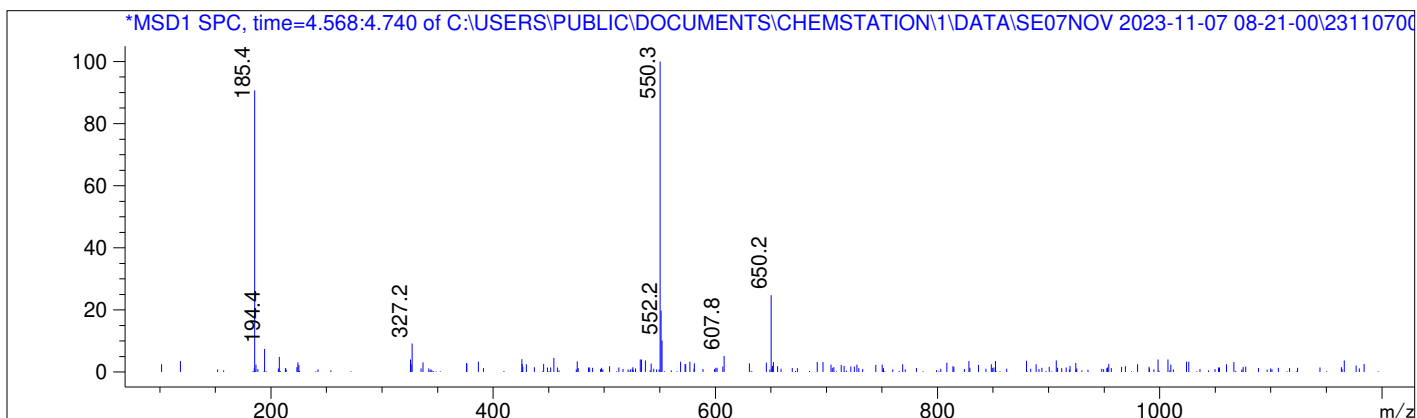
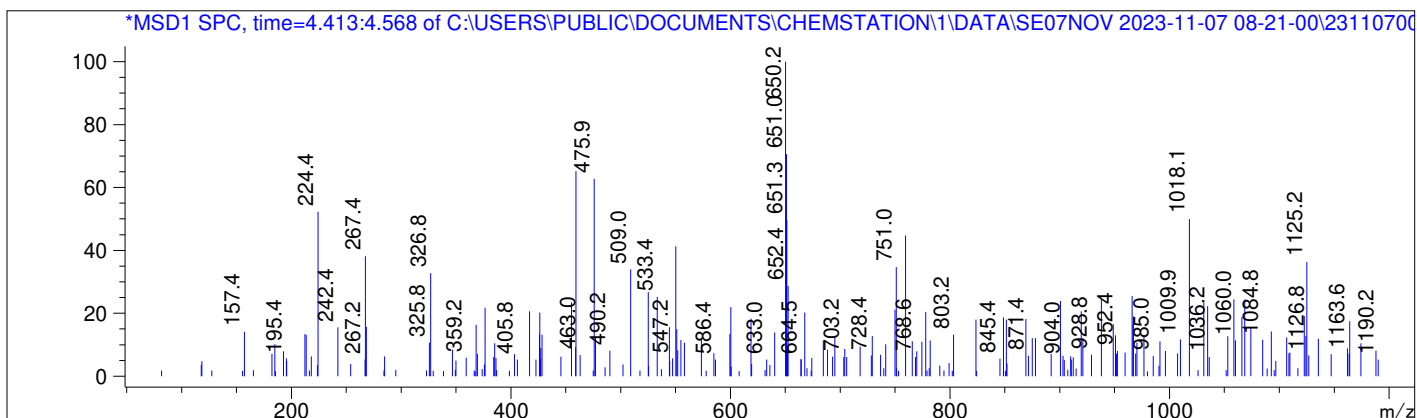
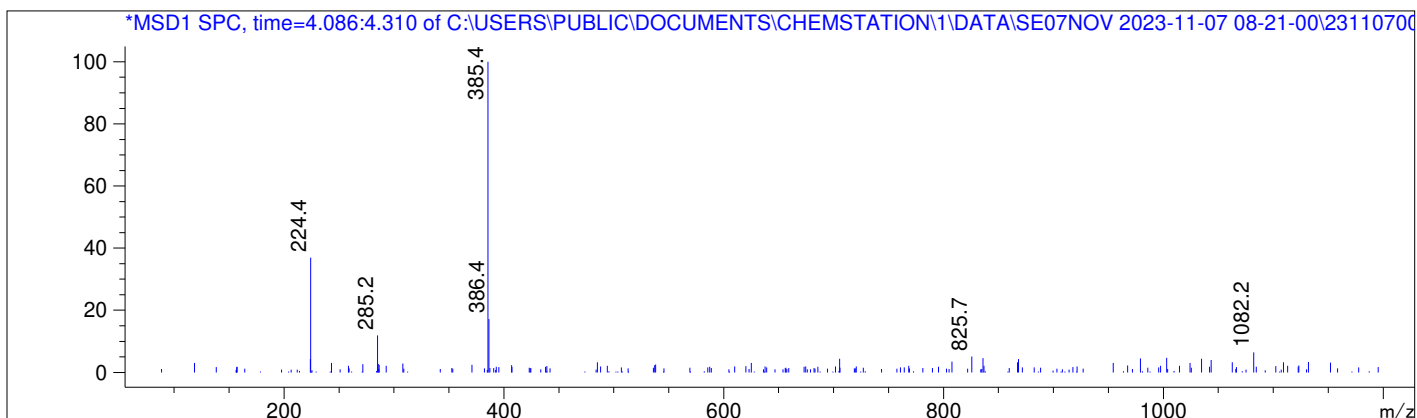
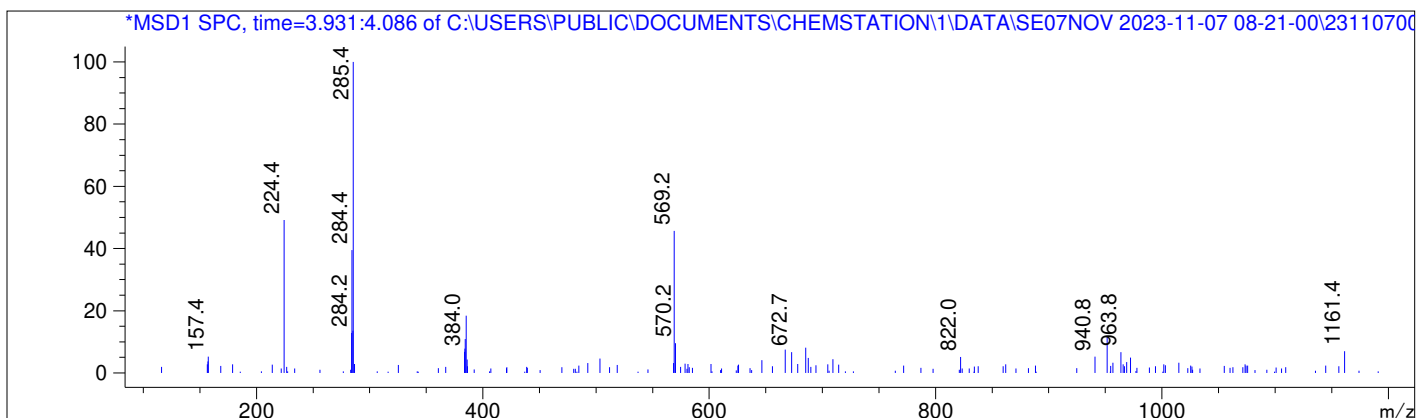
DAD1 A, Sig=215,8 Ref=550,60

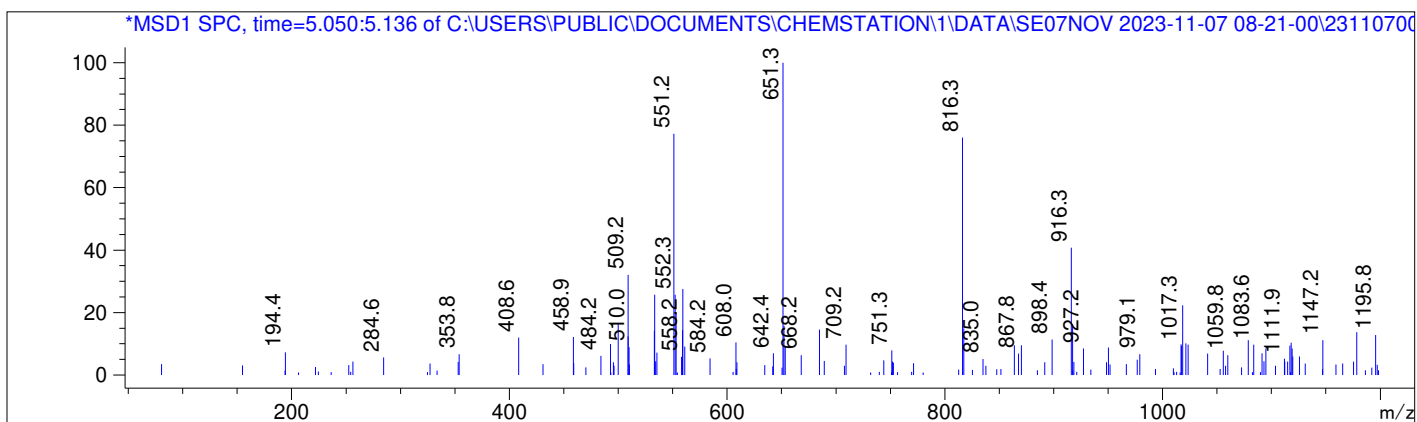
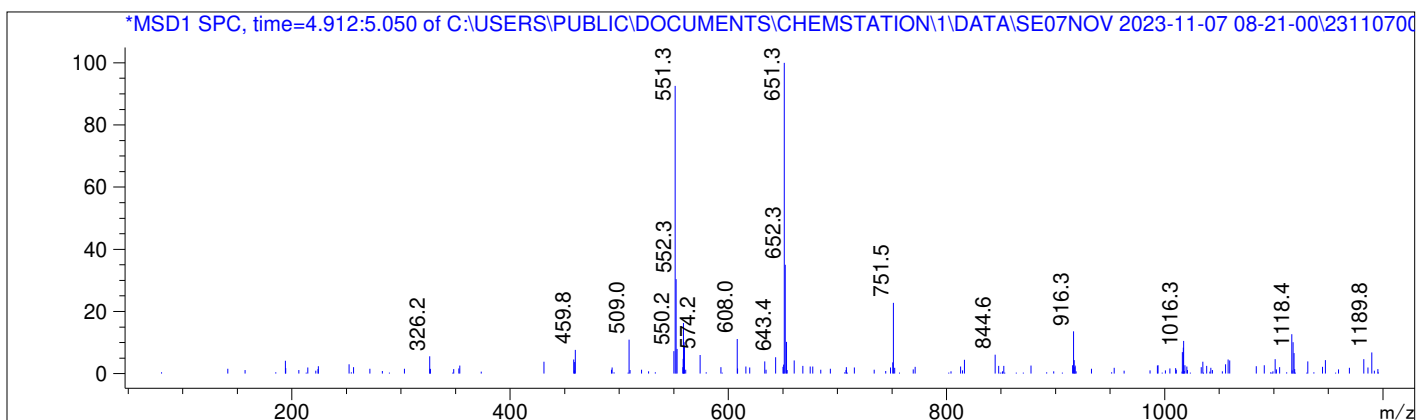
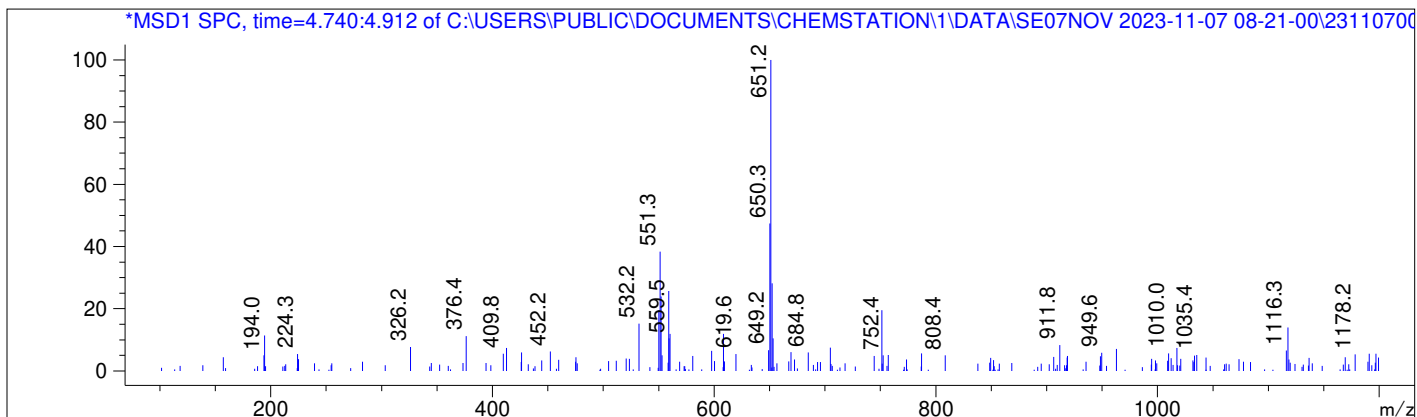
Peak #	Ret. Time [min]	Area [mV *s]	Area %
1	3.678	8.470	0.213
2	3.752	14.493	0.365
3	3.845	45.932	1.155
4	3.918	5.767	0.145
5	3.979	164.026	4.126
6	4.129	102.877	2.588
7	4.458	65.093	1.637
8	4.594	936.371	23.555
9	4.807	76.167	1.916
10	4.929	415.599	10.455
11	5.061	47.241	1.188
12	5.113	68.385	1.720
13	5.284	532.885	13.405
14	5.334	269.864	6.789
15	5.555	333.511	8.390
16	5.587	375.601	9.449
17	5.755	411.621	10.355
18	5.870	101.317	2.549

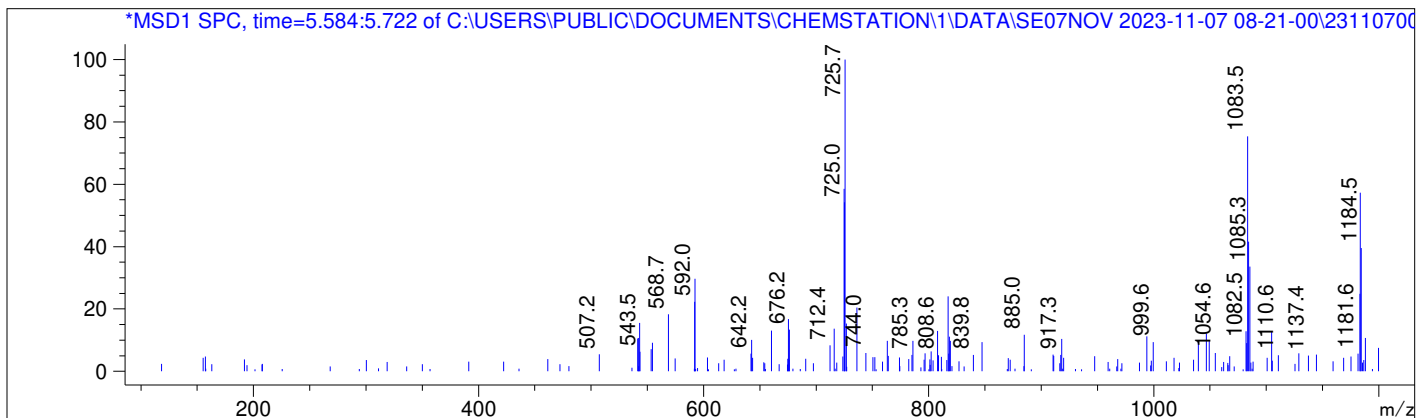
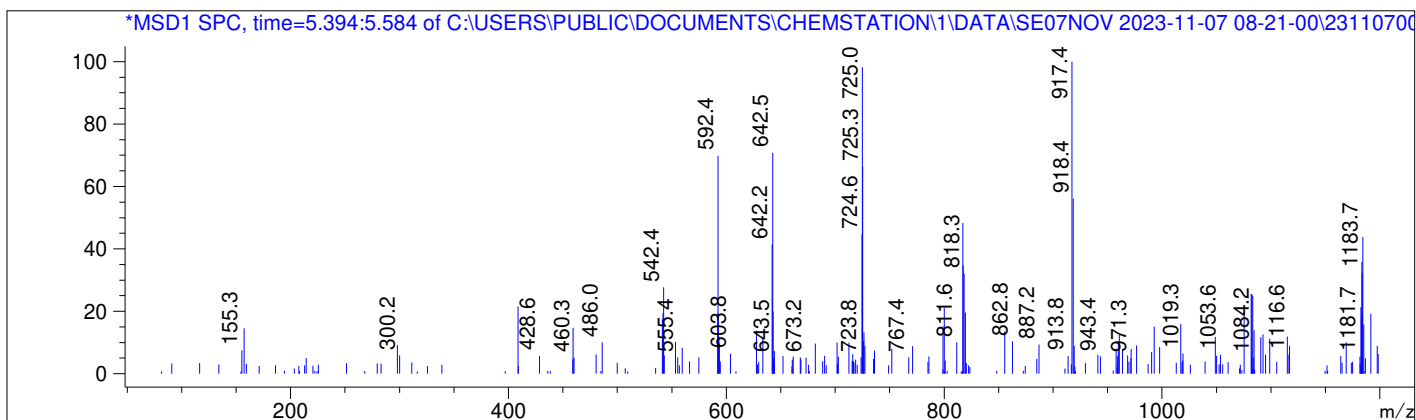
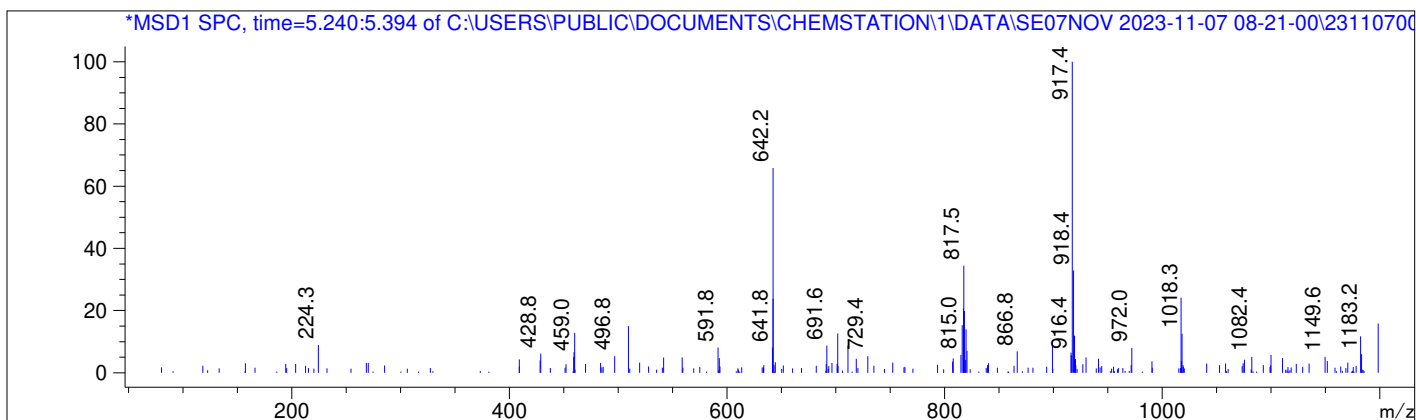
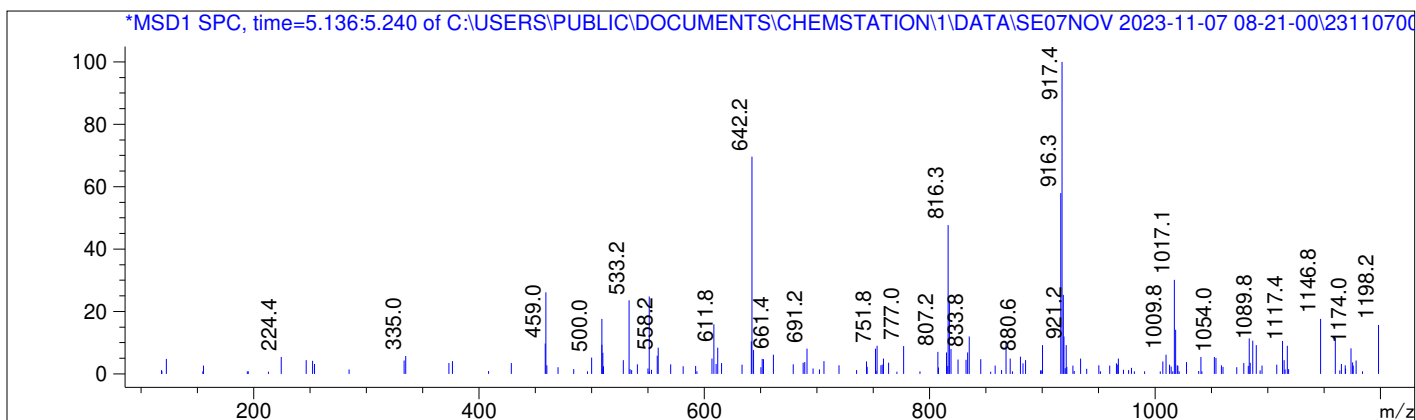
DAD1 B, Sig=254,8 Ref=550,60

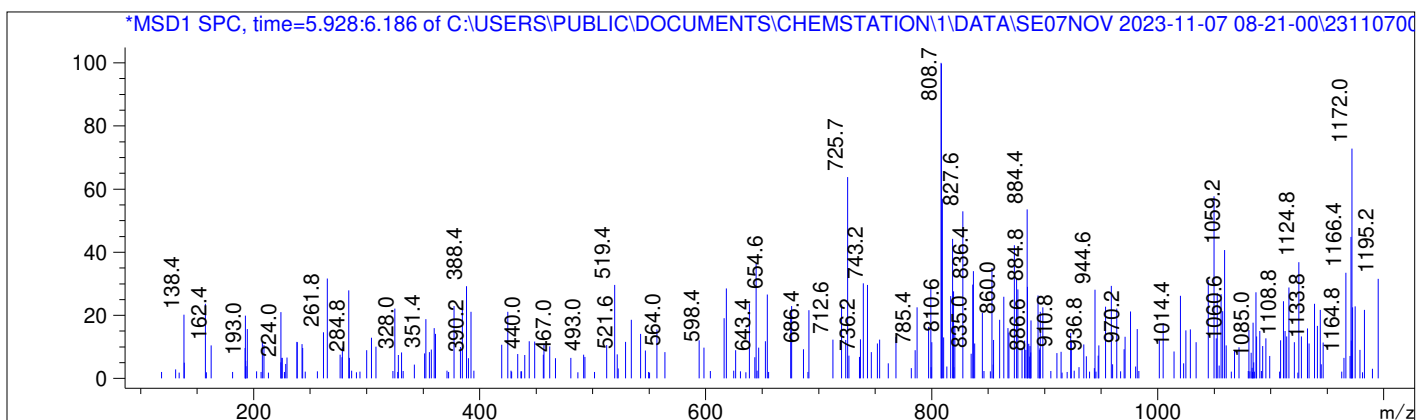
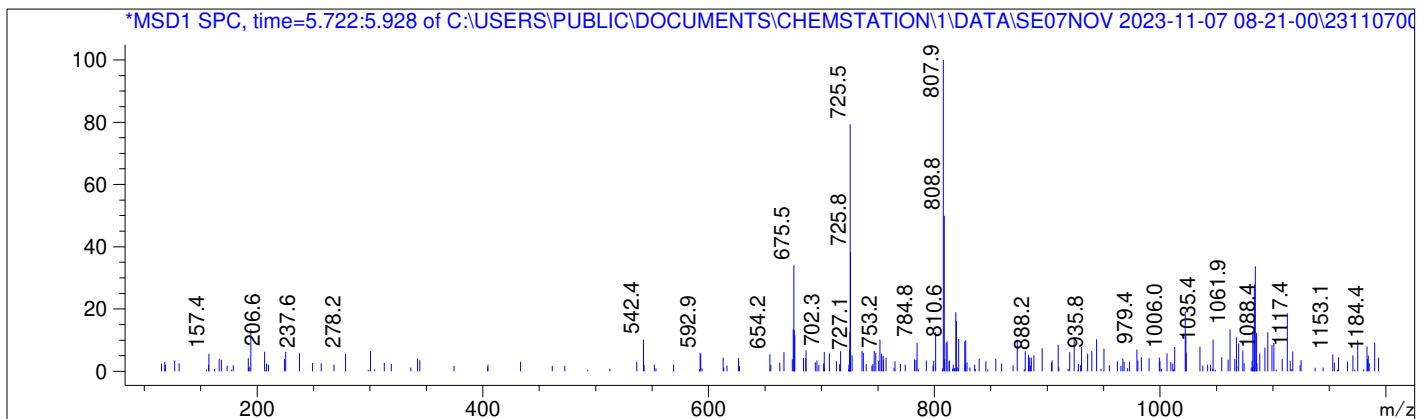
Peak #	Ret. Time [min]	Area [mV *s]	Area %
1	3.679	8.408	0.312
2	3.753	11.246	0.417
3	3.846	34.979	1.297
4	3.979	117.722	4.366
5	4.128	59.528	2.208
6	4.459	41.724	1.547
7	4.594	751.417	27.866
8	4.804	45.911	1.703
9	4.929	268.479	9.957
10	5.057	27.563	1.022
11	5.104	44.460	1.649
12	5.286	345.798	12.824
13	5.337	166.446	6.173
14	5.539	213.831	7.930
15	5.585	235.463	8.732
16	5.754	258.650	9.592
17	5.873	64.871	2.406











Data -> C:\USERS\PUBLIC\DOCUMENTS\CHEMSTATION\1\DATA\SE07NOV 2023-11-07 08-21-00\ ->  
Sample-> CPT22010446-13-D2-80deg-1h

=====

